

Recommended Videos

ACA has been 'nothing but waste, fraud and abuse,'...

Kennedy granddaughter Tatiana Schlossberg dies...

FDA deputy commissioner outlines bold 2026 MAHA...

Florida runi with the An

HEALTH

Mysterious marijuana-linked vomiting disorder gets official WHO code as ER cases jump

WHO adds cannabis-related syndrome to diagnostic manual as ER visits spike 650% since 2016

By [Deirdre Bardolf](#) · [Fox News](#)

Published November 29, 2025 2:11pm EST

Add Fox News on Google

Like

97



10:25 PT

STUDIES LINK BEHAVIORAL CHANGES TO POT, VIDEOGAMES

AMERICA★REPORTS

BULLET CASINGS IN KIRK'S ASSASSINATION INCLUDED VIDEO GAME REFERENCES

New studies link behavioral changes to marijuana usage

NEW You can now listen to Fox News articles!

Listen to this article

5 min

A mysterious vomiting disorder tied to long-term [marijuana use](#) is now formally recognized by global health officials, a move experts say could help save lives as cases surge nationwide.

The World Health Organization (WHO) has formally added cannabis hyperemesis syndrome (CHS) to its diagnostic manual, according to guidance published by the agency in October, giving the mysterious disorder a dedicated code for the first time. The update, which took effect Oct. 1 and is now adopted by the Centers for Disease Control and Prevention, allows physicians nationwide to identify, track and study the condition rather than lumping it into broader vomiting or gastrointestinal categories.

CHS is a dangerous and sometimes deadly syndrome that, according to the National Institutes of Health, affects chronic cannabis users, causing severe nausea, repeated vomiting, abdominal pain, dehydration, weight loss and, in rare cases, heart rhythm problems, seizures, kidney failure and death.

Patients often describe a horrifying symptom known as "scromiting," screaming and vomiting at the same time due to extreme pain, according to the Cleveland Clinic.

POT AND GAMING COMBO COULD POSE HIDDEN HEALTH RISKS, RESEARCHERS WARN

Until now, doctors have struggled to diagnose CHS because its symptoms mimic food poisoning, the stomach flu and more, [Axios reported](#), and some patients have gone months and even years without answers.





Health experts say today's high-THC cannabis products may be fueling a rise in cannabis hyperemesis syndrome. (iStock)

"It helps us count and monitor these cases," said Beatriz Carlini, a research associate professor at the University of Washington School of Medicine.

UW identifies and tracks CHS in its hospitals and emergency rooms and praised the [WHO decision](#) in a Nov. 18 news release.

"A new code for cannabis hyperemesis syndrome will supply important hard evidence on cannabis-adverse events, which physicians tell us is a growing problem," added Carlini, who studies adverse health effects of cannabis use.

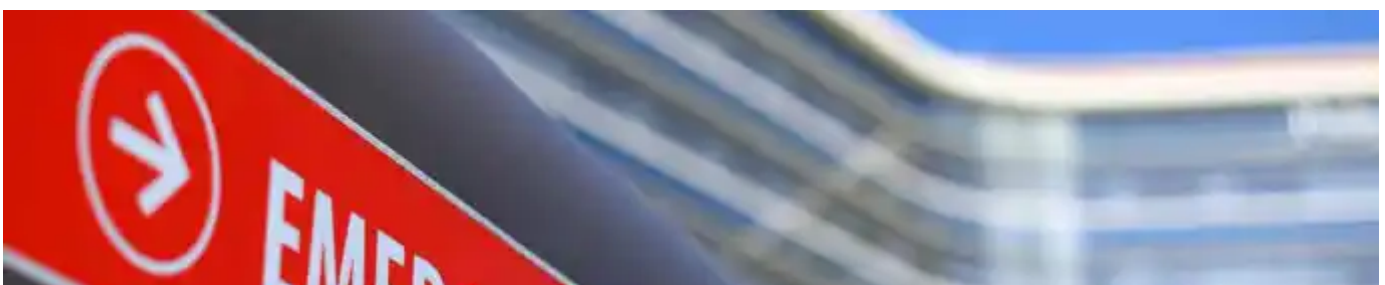
USING MARIJUANA TO COPE WITH STRESS OR TRAUMA MAY BACKFIRE, STUDIES WARN

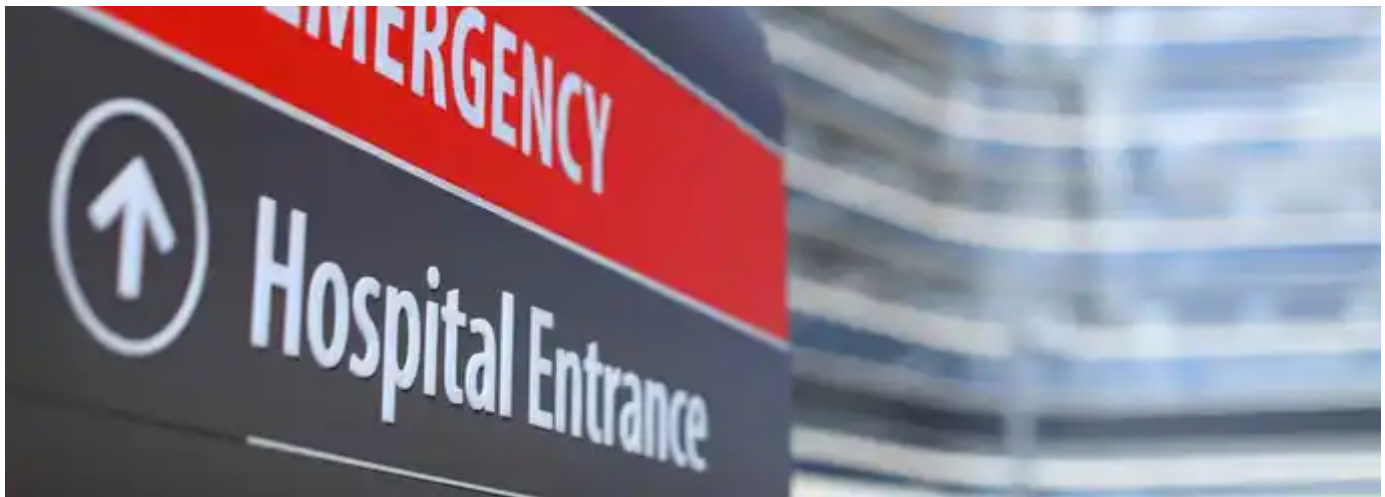
A new JAMA Network Open study published Nov. 24 found emergency room visits for CHS spiked during the COVID-19 pandemic and have remained high ever since. Researchers say isolation, stress and increased access to high-potency cannabis products likely contributed to the rise.

CHS-related ER visits rose approximately 650% from 2016 to their peak during the pandemic, especially among those ages 18 to 35, according to the study. The authors also noted a dramatic shift in THC potency, with today's products often topping 20% THC, compared to just 5% in the 1990s.

'GREEN WEDNESDAY' SURGES AS AMERICANS SWAP ALCOHOL FOR CANNABIS AHEAD OF THANKSGIVING

John Puls, a Florida-based psychotherapist and nationally certified [addiction specialist](#), said he has seen an "alarming" increase in CHS, particularly among adolescents and young adults using high-potency cannabis.





Emergency rooms across the U.S. are reporting a spike in cannabis hyperemesis syndrome cases. (Mike Blake/Reuters)

"In my opinion, and the research also supports this, the increased rates of CHS are absolutely linked to high-potency cannabis. Often, products are over 90% THC," Puls told Fox News Digital. He added that the most common misconception about CHS is that it is not a real condition, which is why he believes the new diagnosis code is "a significant step in the right direction."

[TEST YOURSELF WITH OUR LATEST LIFESTYLE QUIZ](#)

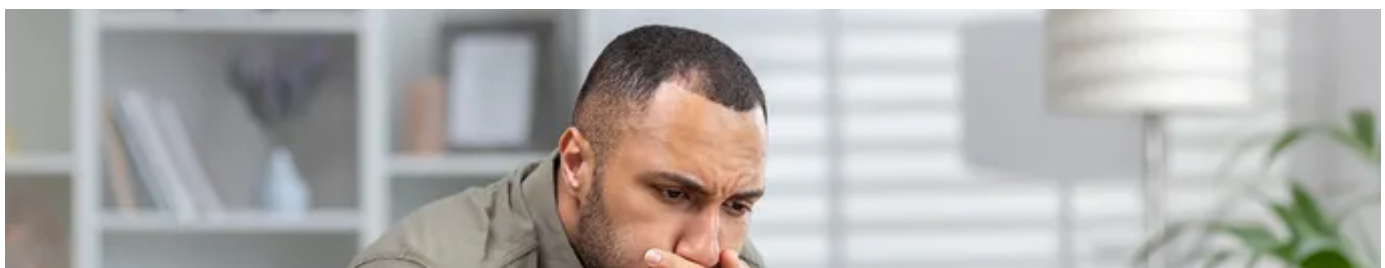
Some researchers, however, note that causation remains unproven, the epidemiology is not fully understood and the underlying cause of CHS is still unknown. One theory is that heavy, long-term cannabis use overstimulates the body's cannabinoid system, triggering the opposite of marijuana's usual anti-nausea effect.

"Although cannabis can be used to treat nausea, those products are typically much lower dose THC, usually less than 5%," Puls said.

[Stopping cannabis](#) use appears to be the only surefire cure, according to the Cleveland Clinic and NIH. Typical nausea medications rarely help, so doctors often turn to stronger drugs or capsaicin cream, which mimics the warm relief many patients get from hot showers.

[CLICK HERE TO SIGN UP FOR OUR LIFESTYLE NEWSLETTER](#)

A telltale sign of CHS is that sufferers often find relief only by taking long, hot showers, a temporary fix scientists still don't fully understand.





Doctors say CHS is frequently misdiagnosed because its symptoms mimic food poisoning and stomach flu. (iStock)

The syndrome is intermittent, which leads some users to believe a bout of illness was a fluke and that they may continue using cannabis without incident before suddenly becoming violently sick again. Experts say many people resist the diagnosis, and even those who accept it often find it hard to [quit cannabis because of addiction](#).

[CLICK HERE FOR MORE LIFESTYLE STORIES](#)

"Some people say they've used cannabis without a problem for decades," said Dr. Chris Buresh, an emergency medicine specialist with UW Medicine. "But even small amounts can make these people start throwing up."

And once someone has had CHS, Puls noted, they're more likely to experience it again.

"My hope would be that with this new diagnosis code that CHS is more accurately diagnosed in an emergency room setting," he said.

[CLICK HERE TO GET THE FOX NEWS APP](#)

Public health experts expect the new WHO code to dramatically improve surveillance and help physicians spot trends, especially as legalization spreads and high-potency products proliferate.

Deirdre Bardolf is a lifestyle writer with Fox News Digital.

Related Topics

[Health](#)[Cannabis](#)[Addiction](#)[Drug and Substance Abuse](#)[Lifestyle](#)[Cold and Flu](#)

Conversation 4.7K Comments

2 Viewing

Discussions are moderated. For more details, click [here](#).

What do you think?

Sort by Best

- C

CyanGrapes

29 November, 2025

Policies aimed at limiting access to prescription opioids, while intended to curb misuse and overdose deaths, have had significant unintended negative consequences for chronic pain patients, including **an increased risk of turning to illicit substances (like heroin, fentanyl and marijuana and elevat...**

See more

Reply

👍 117

👎 16

Share
- u

USAisbackMAGA

29 November, 2025

A person with cancer or terminally ill gets pain medications as needed. A person with chronic pain syndrome needs to see a Md monthly who specializes in pain mgmt and do drug screening (making sure they are taking it not selling) also gets medication they need.

Reply

👍 26

👎 10

Share

↪ 12 replies
- ↪ Show 13 more replies

- BidenVoted4Trump

29 November, 2025

I was diagnosed with CHS years ago. My father is an ER doc and he diagnosed me. Hot showers providing relief is the dead give away and they often treat it with a capcacin rub on the chest. It's definitely THC potency. I smoked for years, but I didn't start feeling the early effects until I began al...

See more

Reply

👍 61

👎 11

Share